
Hurricane Beryl

Current Watches and Warnings

A Storm Surge Warning is in effect for...

- Port O'Connor to Sabine Pass, including Matagorda Bay and Galveston Bay

A Tropical Storm Warning is in effect for...

- The Texas coast from north of Port O'Connor northward to Sabine Pass

Current Details from the National Hurricane Center

LOCATION: 29.8N, 95.7W

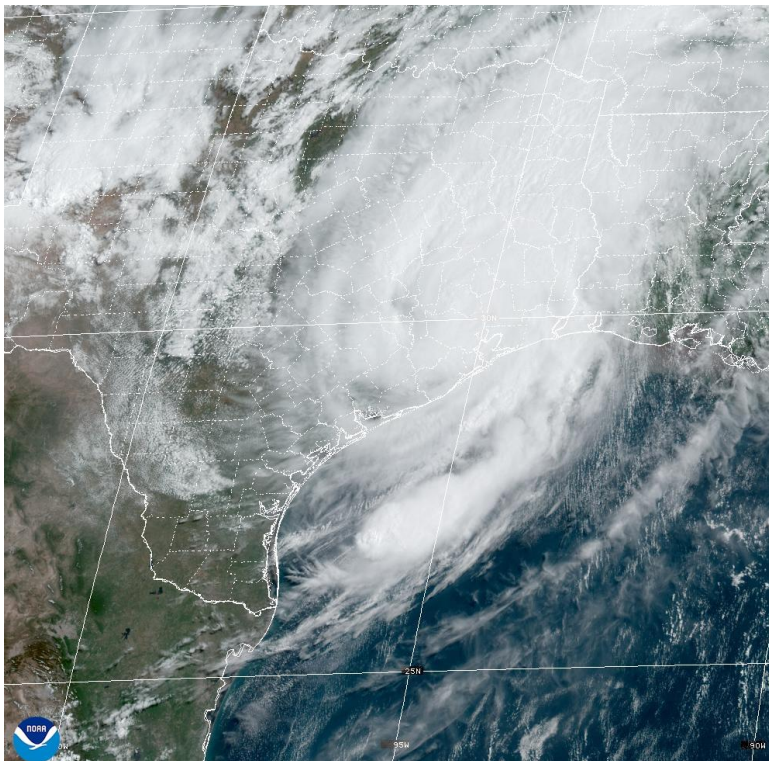
ABOUT 20 MI / 30 KM WNW OF HOUSTON TEXAS

MAXIMUM SUSTAINED WINDS: 70 MPH / 110 KPH

PRESENT MOVEMENT: NNE OR 15 DEGREES AT 13 MPH / 20 KPH

MINIMUM CENTRAL PRESSURE: 984 MB / 29.06 INCHES

Latest Satellite Imagery



Source: NOAA / NASA / Colorado State university (RAAMB)

Discussion

Despite being overland for about 6 hours, NWS radar and surface data indicate that the system has only slightly weakened, with a fairly well-defined eye present. The initial wind speed is set to 60 kt, as a compromise of Doppler wind velocities and surface observations. While Beryl is no longer a hurricane, there are still many life-threatening hazards associated with the storm, and these are detailed in the Key Messages below.

Beryl should remain a potent wind gust producer for the next few hours with recent observations in the eastern eyewall reporting wind gusts above 70 kt. As more of the circulation moves inland later today, Beryl is forecast to steadily weaken and become a tropical depression tonight or overnight. No change to the intensity forecast has been made.

The storm is moving north-northeastward, now a little faster at 11 kt. Beryl should turn northeastward and accelerate across the lower Mississippi Valley into the Ohio Valley during the next couple of days until dissipation occurs between 72-96 h. The new forecast track is similar to the previous forecast, a bit to the east.

Key Messages from the National Hurricane Center

1. Life-threatening storm surge inundation will continue through this afternoon along the coast of Texas from Port O'Connor to Sabine Pass, including the eastern portion of Matagorda Bay and Galveston Bay.
2. Damaging wind gusts near the core of Beryl will continue to spread northward within the Tropical Storm Warning area, including the Houston metro area, for the next several hours.
3. Considerable flash and urban flooding is expected today into tonight across portions of the middle and upper Texas Gulf Coast and eastern Texas. Minor to isolated major river flooding is also expected.
4. Rip currents will cause life-threatening beach conditions through Tuesday across portions of the northern and western Gulf coasts. Beachgoers should heed warning flags and the advice of lifeguards and local officials before venturing into the water.

Additional Information

WIND: Tropical storm conditions with damaging wind gusts will continue within the tropical storm warning area for the next several hours.

STORM SURGE: The combination of storm surge and tide will cause normally dry areas near the coast to be flooded by rising waters moving inland from the shoreline. The water could reach the following heights above ground somewhere in the indicated areas if the peak surge occurs at the time of high tide...

Freeport, TX to High Island, TX...4-6 ft

Galveston Bay...4-6 ft

High Island, TX to Sabine Pass, TX...3-5 ft

Matagorda, TX to Freeport, TX...3-5 ft

The deepest water will occur along the immediate coast near and to the right of the center, where the surge will be accompanied by large and destructive waves. Surge-related flooding depends on the relative timing of the surge and the tidal cycle, and can vary greatly over short distances. For information specific to your area, please see products issued by your local National Weather Service forecast office.

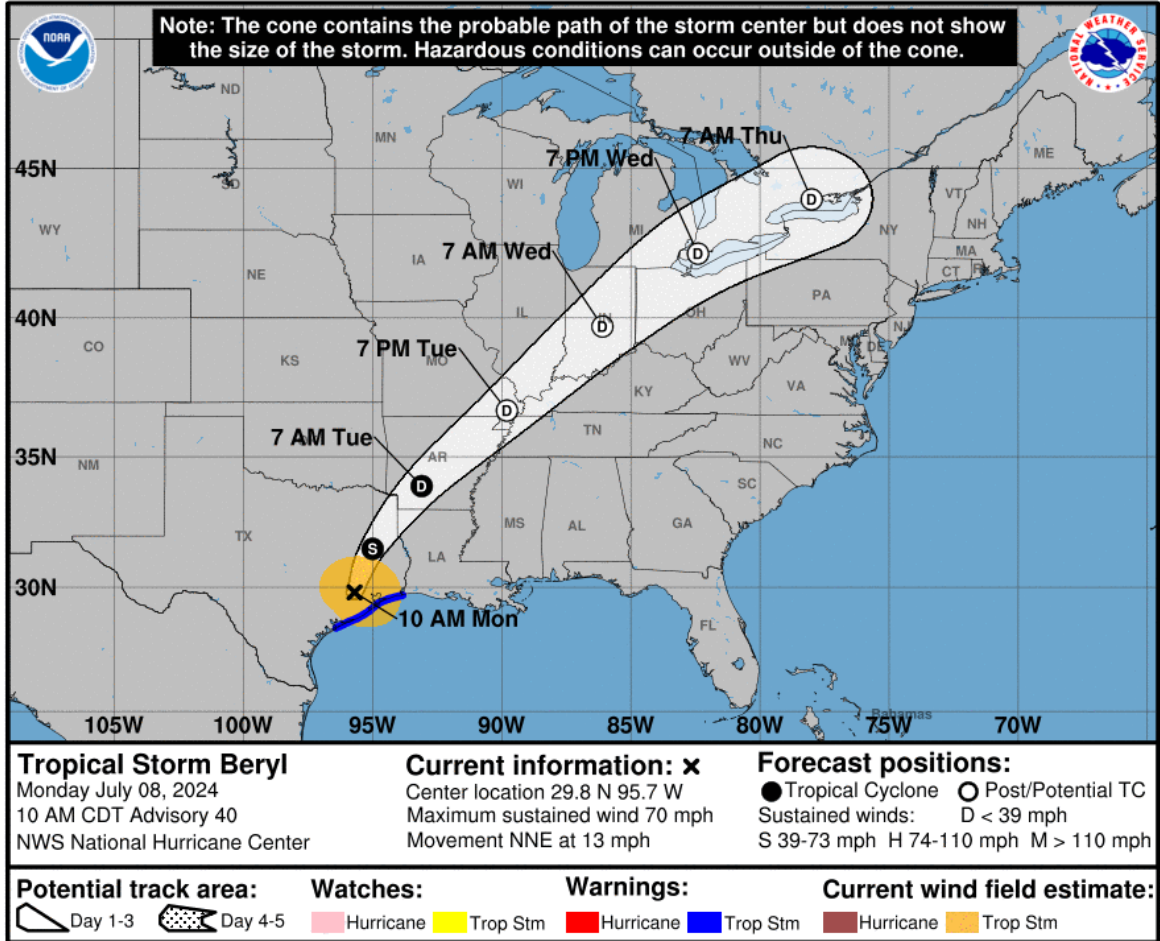
RAINFALL: Heavy rainfall of 5 to 10 inches with localized amounts of 15 inches is expected across portions of the Upper Texas Coast and eastern Texas today into tonight. Considerable flash and urban flooding as well as minor to isolated major river flooding is expected.

Heavy rainfall of 3 to 5 inches, with locally higher amounts possible, is expected across portions of far southeastern Oklahoma, Arkansas and southern Missouri tonight into Tuesday.

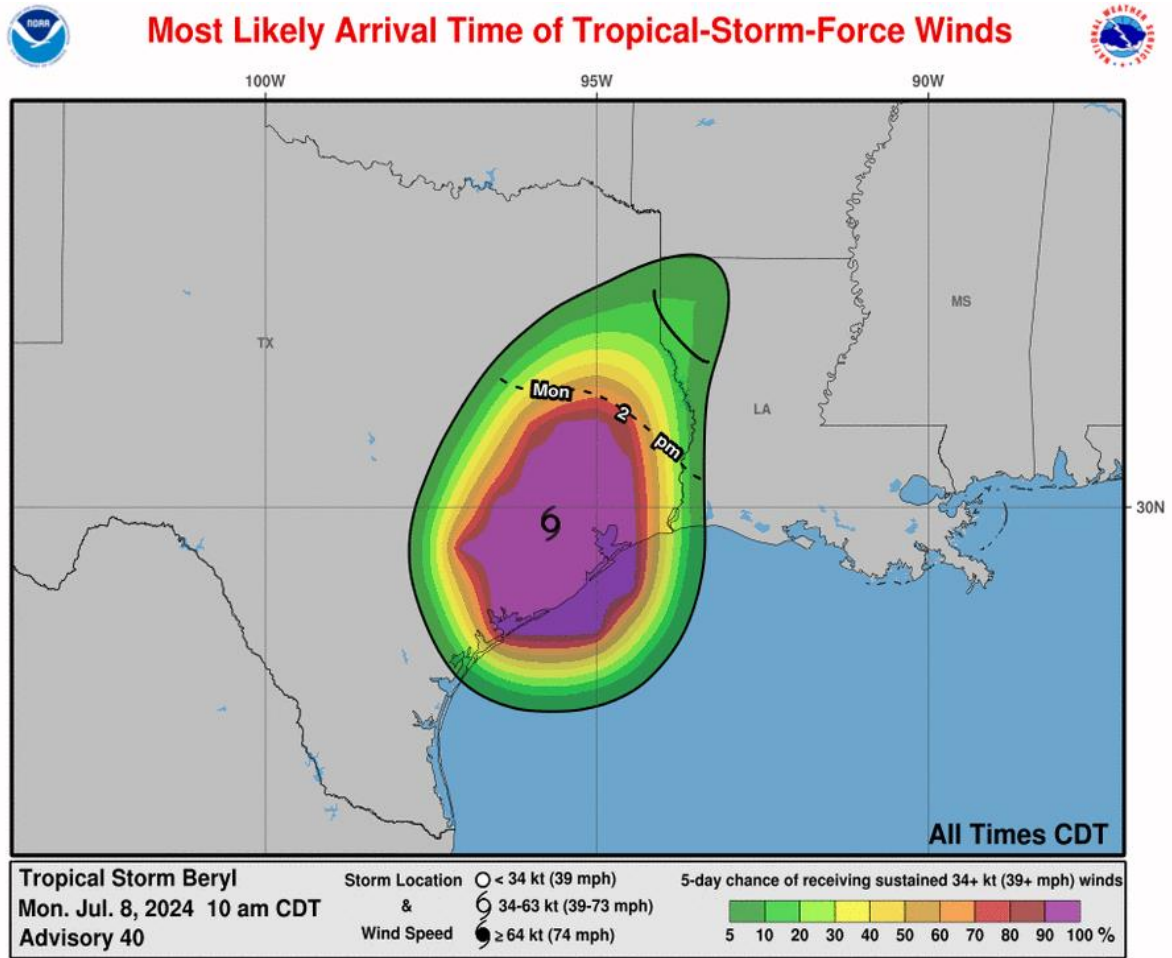
TORNADOES: Several tornadoes are possible through tonight across parts of east Texas, Louisiana, and Arkansas.

SURF: Swells generated by Beryl are expected to affect eastern Mexico and much of the northern and western Gulf Coast of the U.S. during the next day or so. These swells are expected to cause life-threatening surf and rip current conditions. Please consult products from your local weather office.

National Hurricane Center Forecast



Most Likely Arrival Time of Tropical Storm-Force Winds

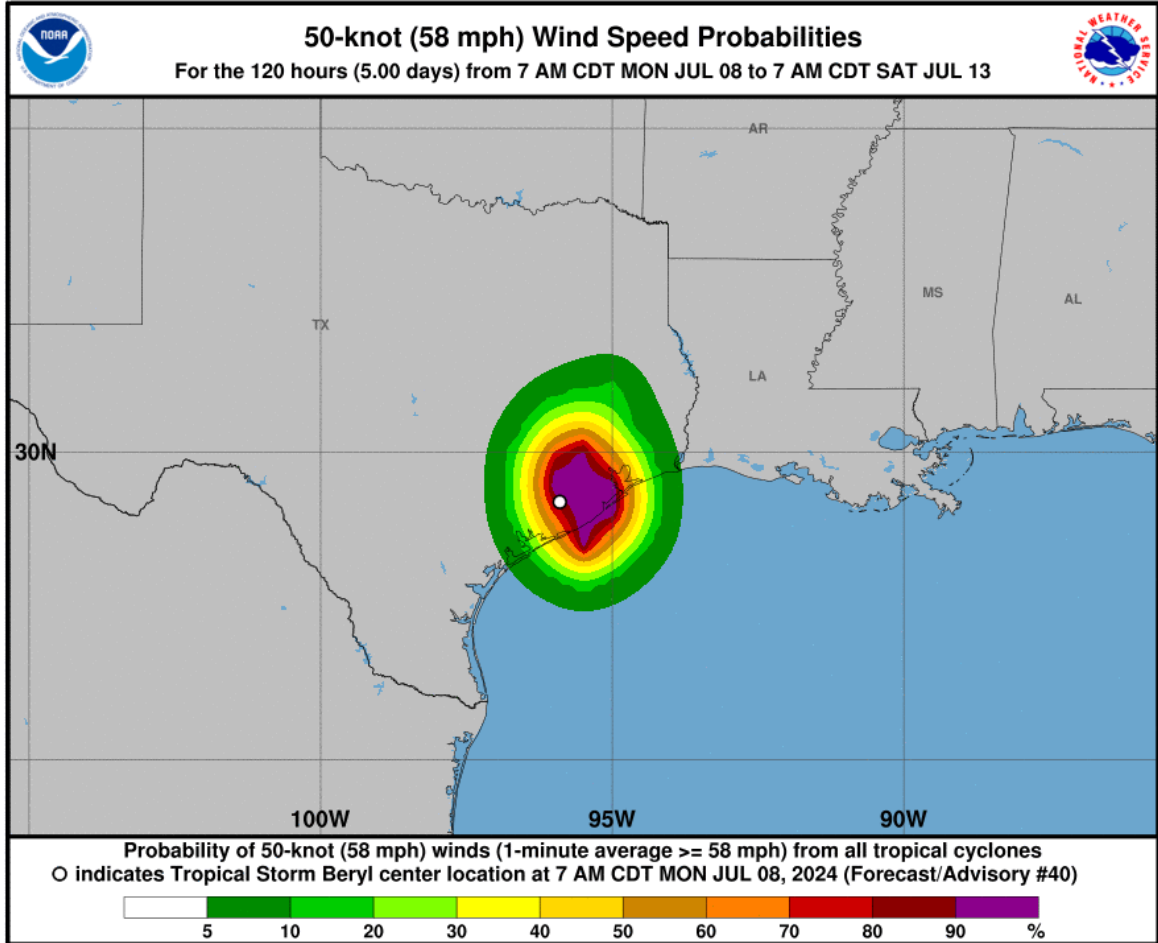


National Hurricane Center: Wind Speed Probabilities

Tropical Storm-Force Wind Probabilities (≥ 40 mph (65 kph))



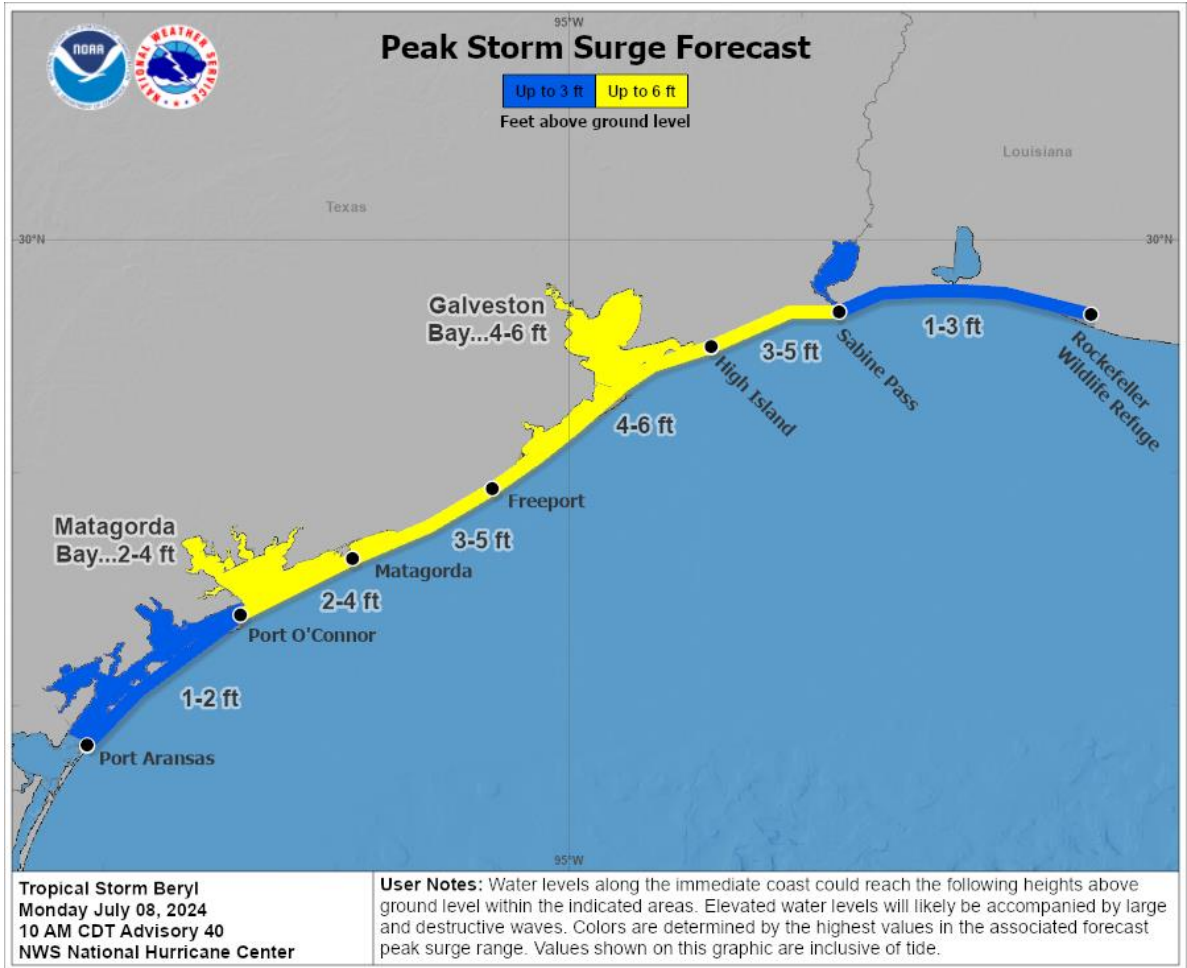
Wind Probabilities (≥ 60 mph (95 kph))



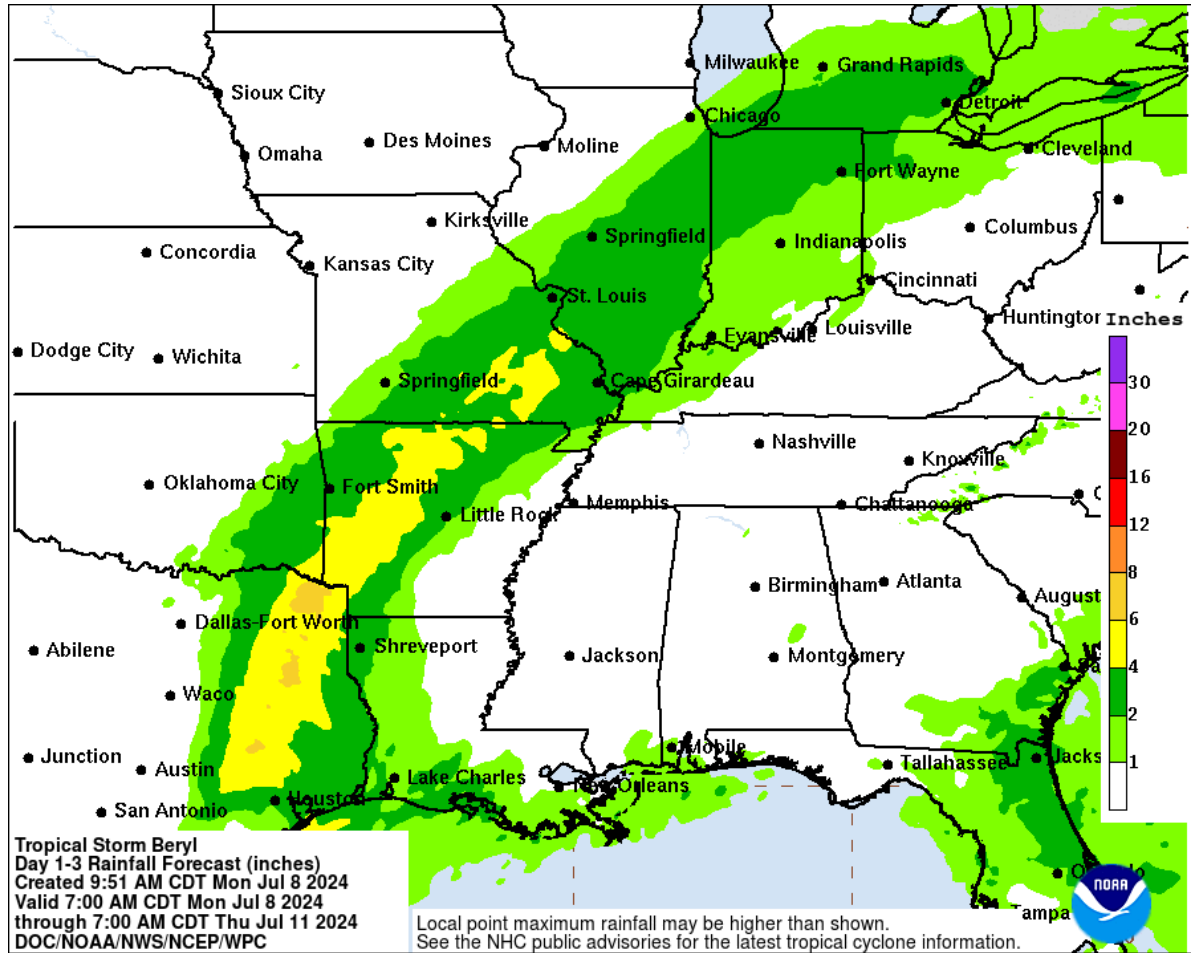
Hurricane-Force Wind Probabilities (≥ 75 mph (120 kph))



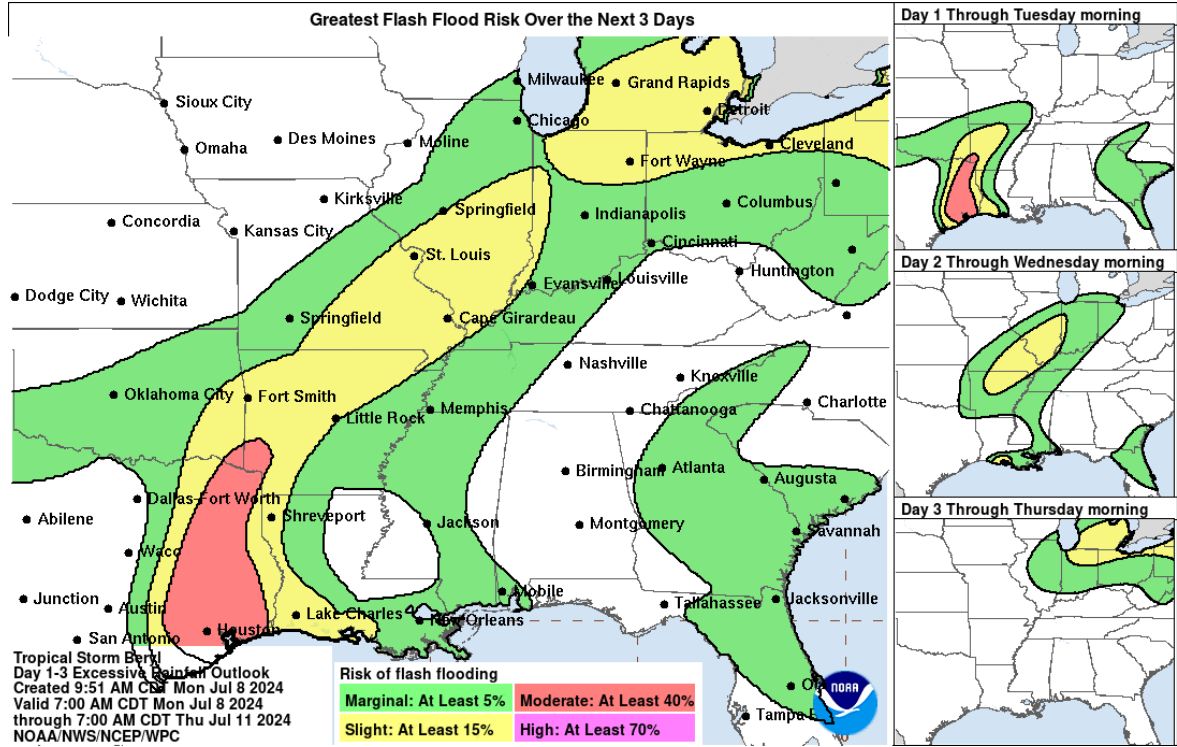
National Hurricane Center: Storm Surge Inundation Graphic



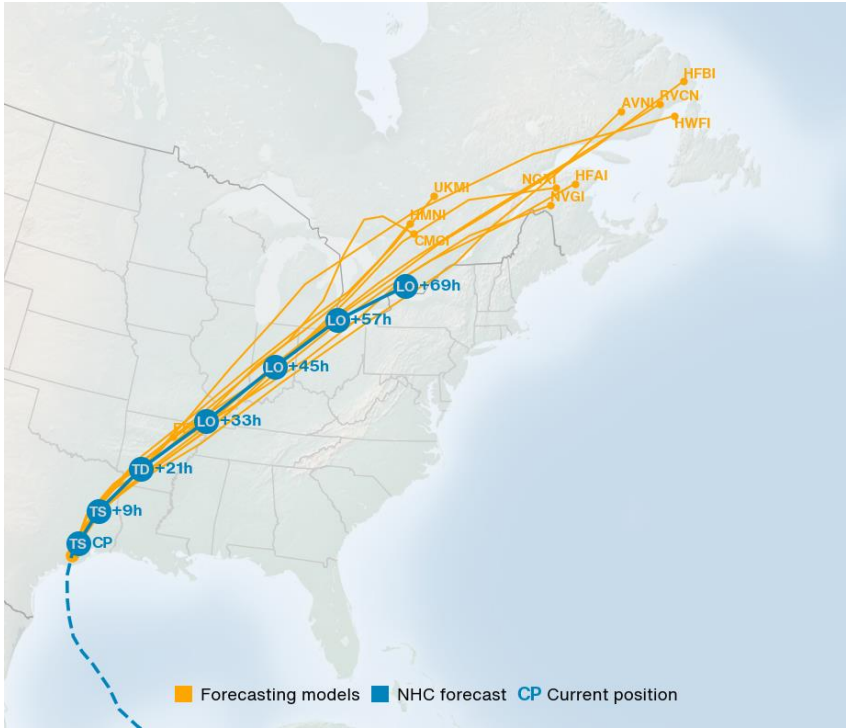
Weather Prediction Center: Rainfall Potential



Weather Prediction Center: Flash Flood Potential



Current Model Output Used in Impact Forecasting's Automated Event Response



Source: NOAA

Additional Information and Update Schedule

Wind intensity forecasts and forecast track information can be found via the National Hurricane Center at www.nhc.noaa.gov

NEXT CAT ALERT: This will be the final cat alert for Beryl.

Appendix: Tropical Cyclone Intensity Classifications for Global Basins

WIND SPEED			BASINS AND MONITORING BUREAU						
KT	MPH	KPH	NE Pacific, Atlantic	NW Pacific	NW Pacific	SW Pacific	Australia	SW Indian	North Indian
			National Hurricane Center (NHC)	Joint Typhoon Warning Center (JTWC)	Japan Meteorological Agency (JMA)	Fiji Meteorological Service (FMS)	Bureau of Meteorology (BOM)	Meteo-France (MF)	India Meteorological Department (IMD)
30	35	55	Tropical Depression	Tropical Depression	Tropical Depression	Tropical Depression	Tropical Low	Tropical Depression	Deep Depression
35	40	65	Tropical Storm	Tropical Storm	Tropical Storm	Cat. 1 Tropical Cyclone	Cat. 1 Tropical Cyclone	Moderate Tropical Storm	Cyclonic Storm
40	45	75							
45	50	85							
50	60	95							
55	65	100							
60	70	110	Cat. 2 Tropical Storm	Cat. 2 Tropical Storm	Cat. 2 Tropical Cyclone	Cat. 2 Tropical Cyclone	Severe Tropical Storm	Severe Cyclonic Storm	
65	75	120							
70	80	130							
75	85	140							
80	90	150							
85	100	160	Cat. 1 Hurricane	Typhoon	Typhoon	Cat. 3 Severe Tropical Cyclone	Cat. 3 Severe Tropical Cyclone	Tropical Cyclone	Very Severe Cyclonic Storm
90	105	170							
95	110	175							
100	115	185							
105	120	195							
110	125	205	Cat. 2 Hurricane	Typhoon	Typhoon	Cat. 4 Severe Tropical Cyclone	Cat. 4 Severe Tropical Cyclone	Intense Tropical Cyclone	Very Severe Cyclonic Storm
115	130	210							
120	140	220							
125	145	230							
130	150	240							
135	155	250	Cat. 3 Major Hurricane	Super Typhoon	Cat. 5 Severe Tropical Cyclone	Cat. 5 Severe Tropical Cyclone	Very Intense Tropical Cyclone	Super Cyclonic Storm	
140	160	260							
>140	>160	>260							

About Aon

Aon plc (NYSE:AON) is a leading global professional services firm providing a broad range of risk, retirement and health solutions. Our 50,000 colleagues in 120 countries empower results for clients by using proprietary data and analytics to deliver insights that reduce volatility and improve performance.

© Aon plc 2024. All rights reserved.

The information contained herein and the statements expressed are of a general nature and are not intended to address the circumstances of any particular individual or entity. Although we endeavor to provide accurate and timely information and use sources we consider reliable, there can be no guarantee that such information is accurate as of the date it is received or that it will continue to be accurate in the future. No one should act on such information without appropriate professional advice after a thorough examination of the particular situation.

Copyright © by Impact Forecasting®

No claim to original government works. The text and graphics of this publication are provided for informational purposes only.

While Impact Forecasting® has tried to provide accurate and timely information, inadvertent technical inaccuracies and typographical errors may exist, and Impact Forecasting® does not warrant that the information is accurate, complete or current. The data presented at this site is intended to convey only general information on current natural perils and must not be used to make life-or-death decisions or decisions relating to the protection of property, as the data may not be accurate. Please listen to official information sources for current storm information. This data has no official status and should not be used for emergency response decision-making under any circumstances.

Cat Alerts use publicly available data from the internet and other sources. Impact Forecasting® summarizes this publicly available information for the convenience of those individuals who have contacted Impact Forecasting® and expressed an interest in natural catastrophes of various types. To find out more about Impact Forecasting or to sign up for the Cat Reports, visit Impact Forecasting's webpage at [impactforecasting.com](https://www.impactforecasting.com).

Copyright © by Aon plc. All rights reserved. No part of this document may be reproduced, stored in a retrieval system, or transmitted in any form or by any means, electronic, mechanical, photocopying, recording or otherwise. Impact Forecasting® is a wholly owned subsidiary of Aon plc.