

Current Watches and Warnings

A **Hurricane Warning** is in effect for Maui County, including the islands of Maui, Lanai, Molokai, and Kahoolawe; Oahu; Kauai County, including the islands of Kauai and Niihau

A **Tropical Storm Warning** is in effect for Hawaii County; portions of the Papahānaumokuākea Marine National Monument from Nihoa to French Frigate Shoals

A **Tropical Storm Watch** is in effect for portions of the Papahānaumokuākea Marine National Monument from French Frigate Shoals to Maro Reef

Current Details from the Central Pacific Hurricane Center

COORDINATES: 21.2° north, 155.7° west

LOCATION: 55 miles (90 kilometers) east-northeast of Kanului, Hawaii

MOVEMENT: west-northwest at 16 mph (26 kph)

WINDS: 85 mph (140 kph) with gusts to 105 mph (165 kph)

RADIUS OF TROPICAL STORM-FORCE WINDS: 115 (185 kilometers)

RADIUS OF HURRICANE-FORCE WINDS: 35 miles (55 kilometers)

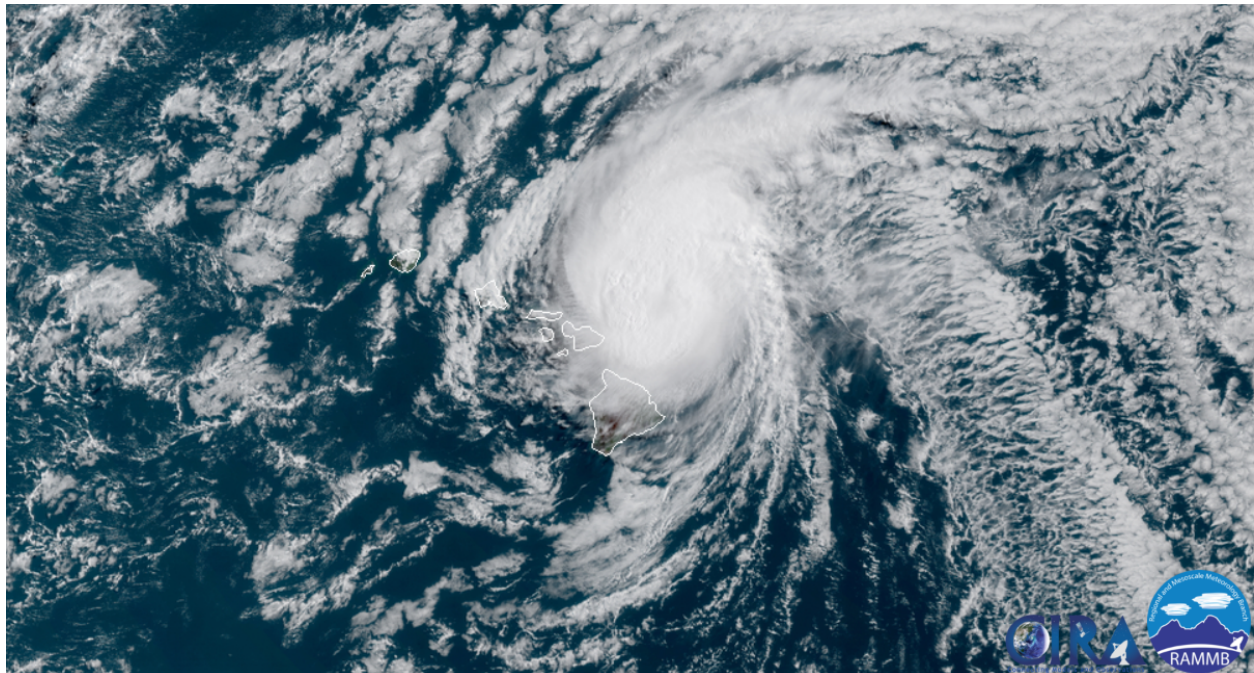
MINIMUM CENTRAL PRESSURE: 987 millibars

SAFFIR-SIMPSON SCALE RANKING*: Category 1

FORECAST LANDFALL LOCATION: Hawaiian Islands (Maui to Kauai)

FORECAST LANDFALL TIMEFRAME: Sunday afternoon or evening local time

Latest Satellite Picture



Source: NOAA, NASA, Colorado State University (RAMMB)

Discussion

Hurricane Douglas, located approximately 55 miles (90 kilometers) east-northeast of Kanului, Hawaii, is currently tracking west-northwest at 16 mph (26 kph). An aircraft from the Air Force 53rd Weather Reconnaissance Squadron continue to fly through and around Douglas, and data shows that the storm remains resilient. Notable thunderstorm activity remains on the west and northern edges of the center despite increasing vertical wind shear. The Hurricane Hunters have found that the center pressure has risen slightly, and a blend of flight-level and surface-adjusted winds support the CPHC lowering the initial intensity to 85 mph (140 kph) – still a Category 1 storm.

Slow weakening is expected as Douglas passes near, or over, portions of the main Hawaiian Islands later today or tonight. Sea surface temperatures will slowly increase along the forecast track, but southerly vertical wind shear will tilt the system and disrupt the circulation. This will lead to gradual weakening for the next few days. However, Douglas is expected to remain a hurricane as it passes very near, or over, portions of the main Hawaiian Islands today and tonight. The CPHC intensity forecast did not change much from the prior advisory as the model guidance remains in good agreement.

The storm continues to generally move towards the west-northwest, as it remains being steered by a mid-level ridge of high pressure. This should bring Douglas very close to the islands from Maui to Kauai through tonight, where a Hurricane Warning remains in effect. The updated CPHC forecast track was not changed much from the previous forecast and remains near the southern edge of a tightly clustered guidance envelope during the next couple of days.

Key Messages from the Central Pacific Hurricane Center

1. Douglas will pass dangerously close to, or over, the islands today and tonight, bringing a triple threat of hazards, including but not limited to damaging winds, flooding rainfall, and dangerously high surf, especially along east facing shores.
2. It remains important that you do not focus on the exact forecast track of Douglas. Due to Douglas' angle of approach to the islands, any wobble in the track could lead to significant differences in where the worst weather occurs. Even if the center remains offshore, severe impacts could still be realized over the islands, as they extend well away from the center.
3. Terrain effects can cause strong localized acceleration of the wind through gaps and where winds blow downslope. These acceleration areas will shift with time as Douglas passes near the islands. Hurricane force wind gusts are possible even within the tropical storm warning area. Winds will also be stronger at the upper floors of high rise buildings.

Additional Information

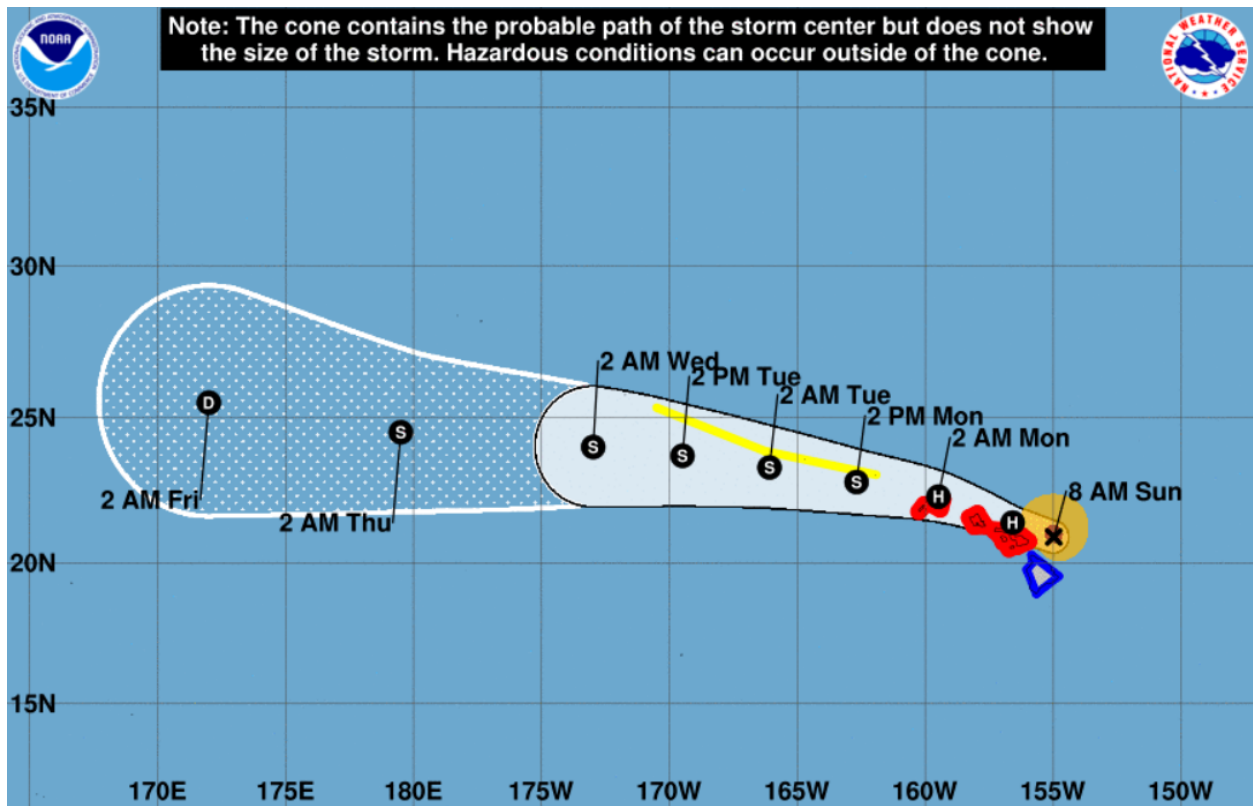
WIND: Hurricane conditions are expected in portions of Maui County today, on Oahu by this afternoon, and on Kauai and Niihau tonight. Tropical Storm conditions are imminent across portions of the Big Island. Due to the steep terrain of the islands, hurricane-force wind gusts are possible even within the Tropical Storm Warning area.

SURF: Large swells generated by Douglas will affect the Hawaiian Islands into Monday, producing life-threatening and potentially destructive surf along exposed shores.

STORM SURGE: The combination of higher than predicted water levels, dangerous storm surge, and large breaking waves will raise water levels by as much as 3 feet above normal tides near the center of Douglas.

RAINFALL: Heavy rainfall associated with Douglas is expected to affect portions of the main Hawaiian Islands today into Monday. Total rain accumulations of 5 to 10 inches are possible from Maui County westward to Kauai County, with the greatest amounts up to 15 inches in elevated terrain. This rain may result in life-threatening flash flooding and landslides, as well as rapid water level rises on small streams. Douglas could produce an additional 2 to 4 inches of rainfall over the northern half of the Big Island.

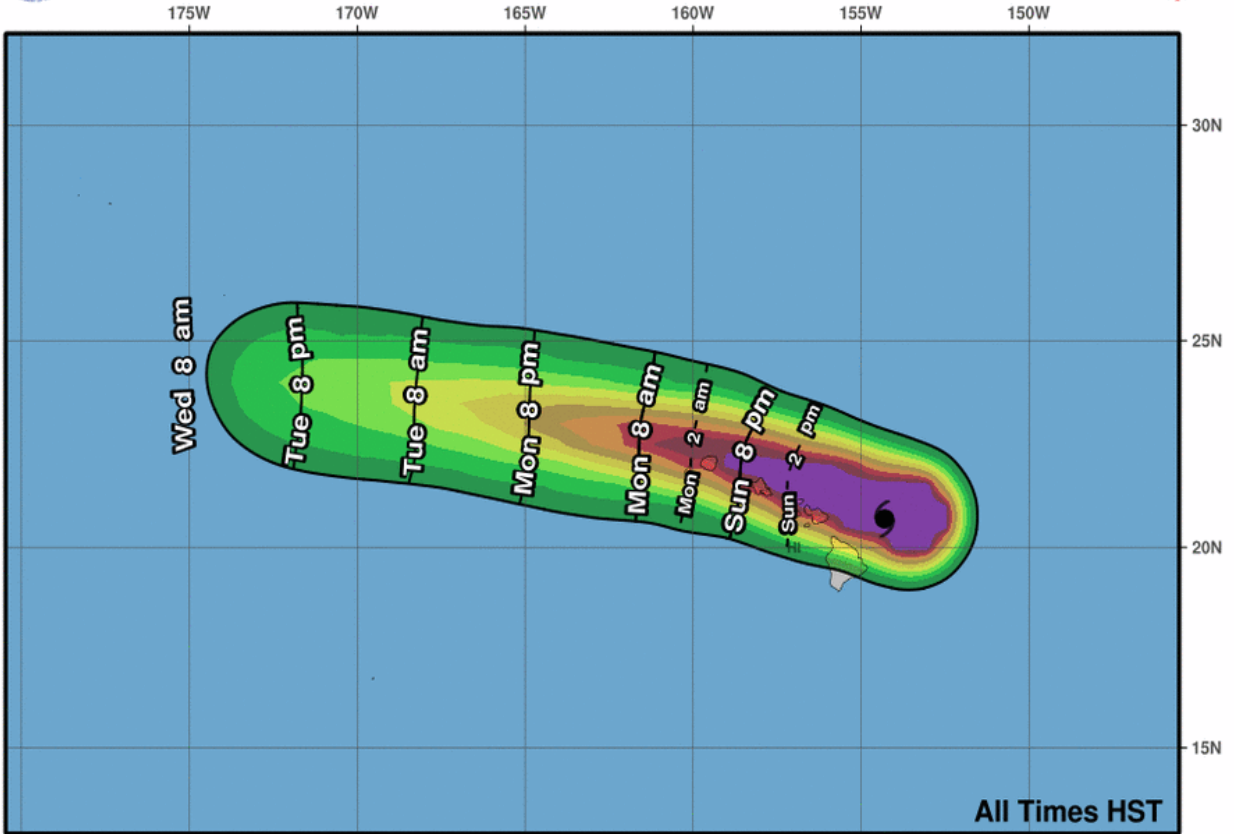
Central Pacific Hurricane Center (CPHC) Forecast



Most Likely Arrival Time of Tropical Storm-Force Winds

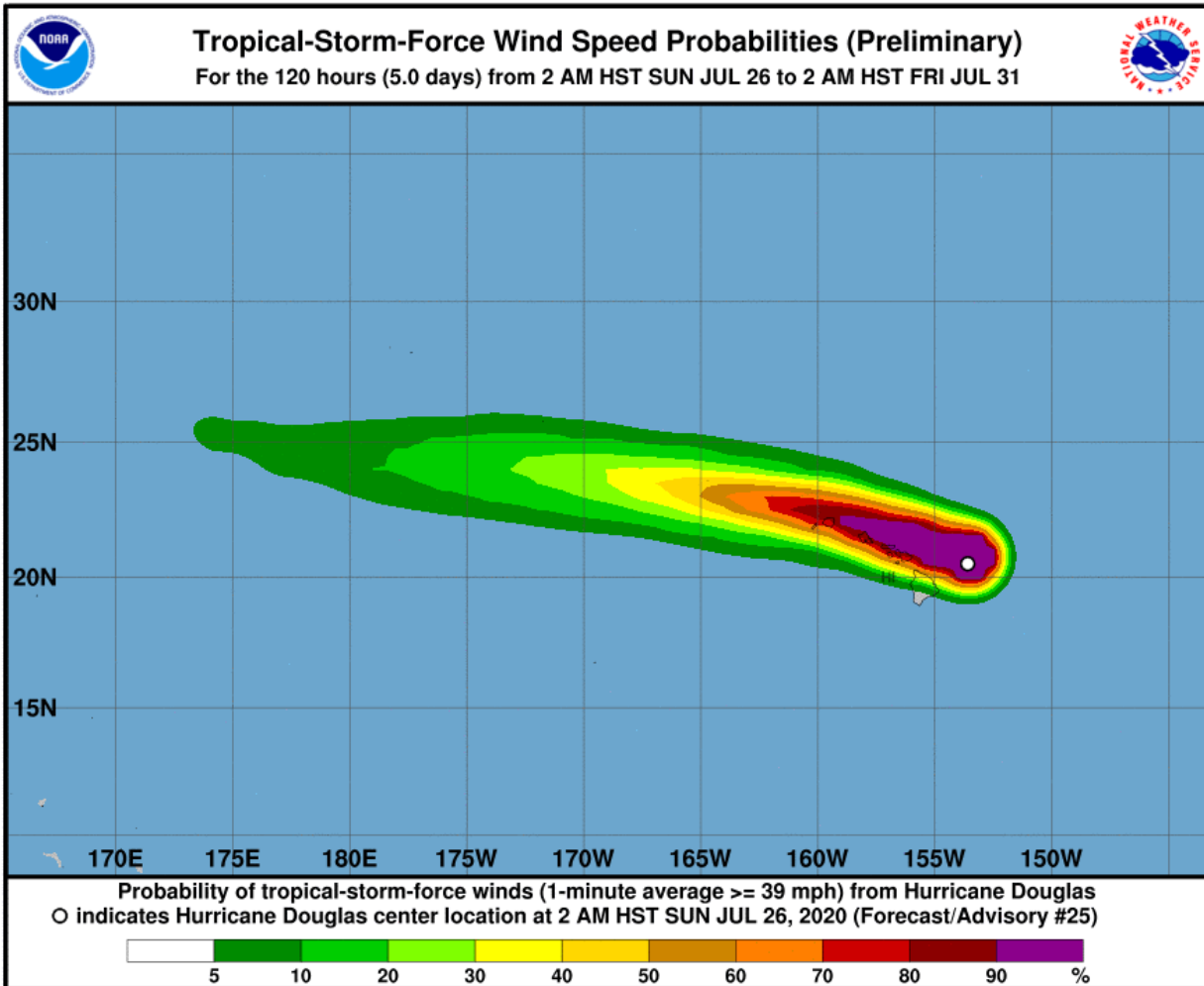


0-3 Day Most Likely Arrival Time of Tropical-Storm-Force Winds

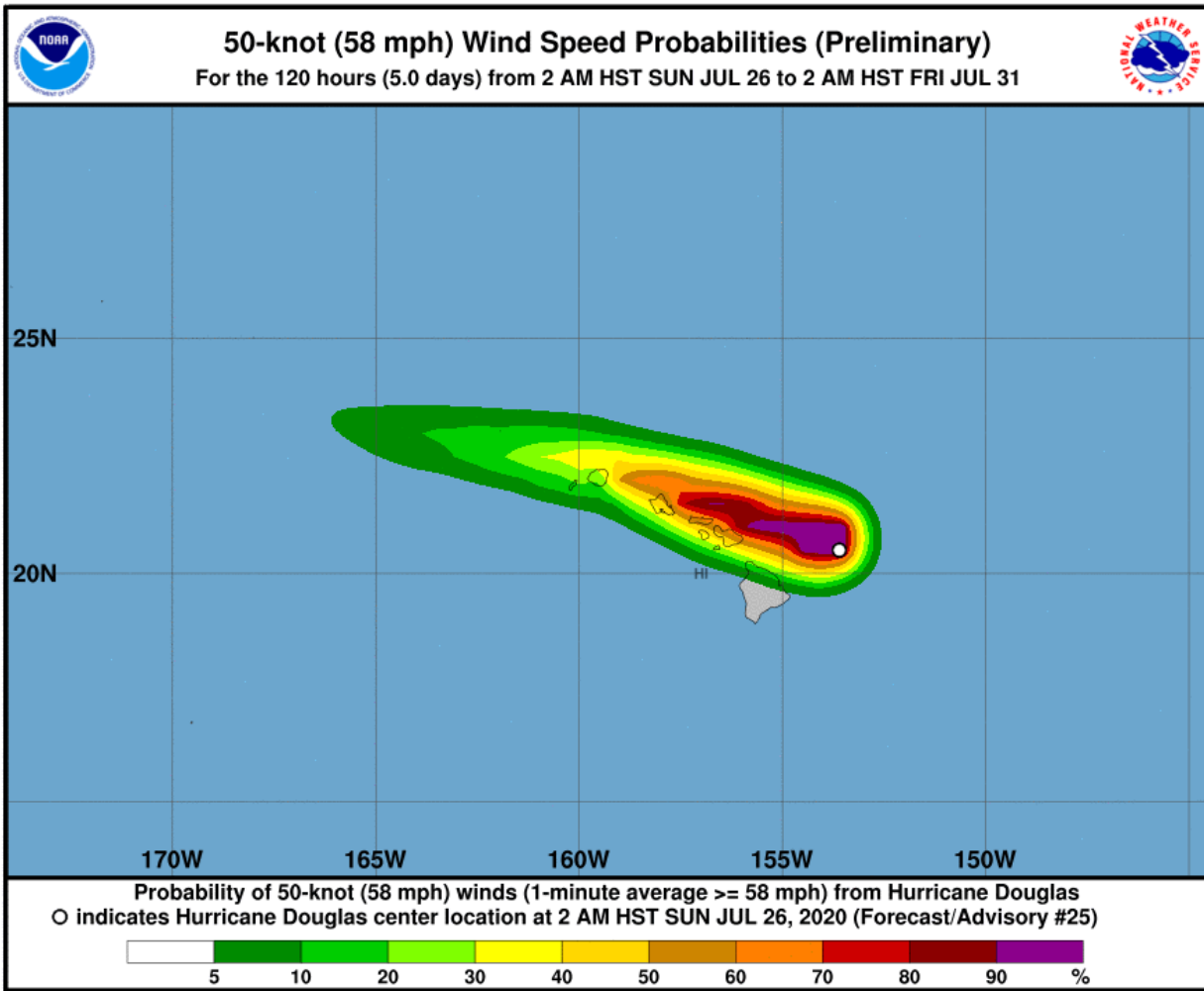


CHPC: Wind Speed Probabilities

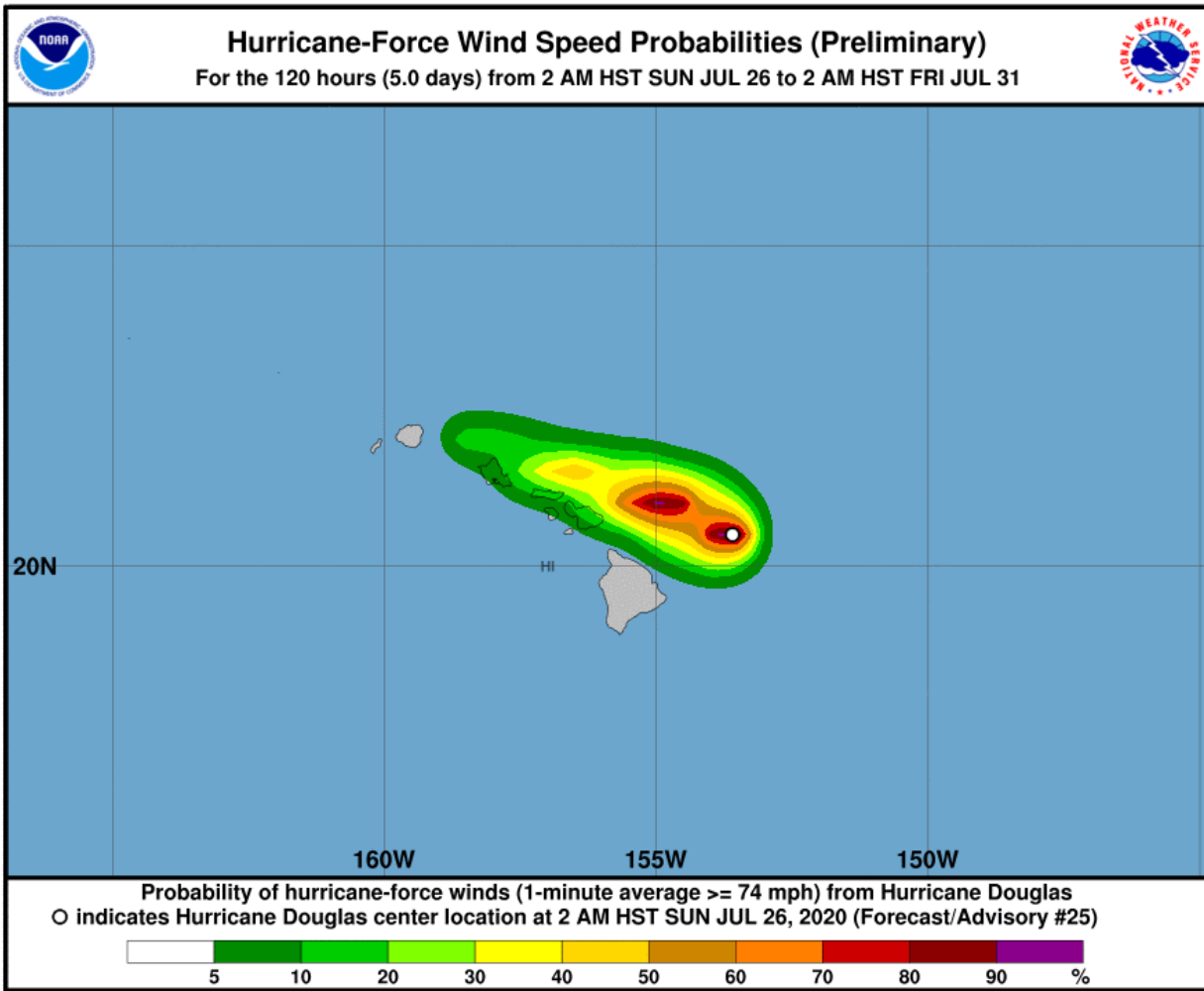
Tropical Storm-Force Wind Probabilities (≥ 40 mph (65 kph))



Wind Probabilities (≥ 60 mph (95 kph))



Hurricane-Force Wind Probabilities (≥ 75 mph (120 kph))



Additional Information and Update Schedule

Wind intensity forecasts and forecast track information can be found via the Central Pacific Hurricane Center at www.nhc.noaa.gov

NEXT CAT ALERT: Since Douglas is forecast to pass very near or over portions of the Hawaiian Islands, and subsequently continue to weaken, this will be the final Cat Alert. Full details can be found in this week's Weekly Cat Report.

*Tropical Cyclone Intensity Classifications for Global Basins

WIND SPEED			BASINS AND MONITORING BUREAU						
KTS ¹	MPH ¹	KPH ¹	NE Pacific, Atlantic	NW Pacific	NW Pacific	SW Pacific	Australia	SW Indian	North Indian
			National Hurricane Center (NHC)	Joint Typhoon Warning Center (JTWC)	Japan Meteorological Agency (JMA)	Fiji Meteorological Service (FMS)	Bureau Of Meteorology (BOM)	Meteo-France (MF)	India Meteorological Department (IMD)
30	35	55	Tropical Depression	Tropical Depression	Tropical Depression	Tropical Depression	Tropical Low	Tropical Depression	Deep Depression
35	40	65	Tropical Storm	Tropical Storm	Tropical Storm	Cat. 1 Tropical Cyclone	Cat. 1 Tropical Cyclone	Moderate Tropical Storm	Cyclonic Storm
40	45	75							
45	50	85							
50	60	95							
55	65	100							
60	70	110	Cat. 1 Hurricane	Typhoon	Typhoon	Cat. 3 Severe Tropical Cyclone	Cat. 3 Severe Tropical Cyclone	Tropical Cyclone	Very Severe Cyclonic Storm
65	75	120							
70	80	130							
75	85	140							
80	90	150							
85	100	160	Cat. 2 Hurricane	Typhoon	Typhoon	Cat. 4 Severe Tropical Cyclone	Cat. 4 Severe Tropical Cyclone	Intense Tropical Cyclone	Very Severe Cyclonic Storm
90	105	170							
95	110	175	Cat. 3 Major Hurricane	Typhoon	Typhoon	Cat. 4 Severe Tropical Cyclone	Cat. 4 Severe Tropical Cyclone	Intense Tropical Cyclone	Very Severe Cyclonic Storm
100	115	185							
105	120	195							
110	125	205	Cat. 4 Major Hurricane	Super Typhoon	Super Typhoon	Cat. 5 Severe Tropical Cyclone	Cat. 5 Severe Tropical Cyclone	Very Intense Tropical Cyclone	Super Cyclonic Storm
115	130	210							
120	140	220							
125	145	230							
130	150	240	Cat. 5 Major Hurricane	Super Typhoon	Super Typhoon	Cat. 5 Severe Tropical Cyclone	Cat. 5 Severe Tropical Cyclone	Very Intense Tropical Cyclone	Super Cyclonic Storm
135	155	250							
140	160	260							
>140	>160	>260	Cat. 5 Major Hurricane	Super Typhoon	Super Typhoon	Cat. 5 Severe Tropical Cyclone	Cat. 5 Severe Tropical Cyclone	Very Intense Tropical Cyclone	Super Cyclonic Storm

About Aon

Aon plc (NYSE:AON) is a leading global professional services firm providing a broad range of risk, retirement and health solutions. Our 50,000 colleagues in 120 countries empower results for clients by using proprietary data and analytics to deliver insights that reduce volatility and improve performance.

© Aon plc 2020. All rights reserved.

The information contained herein and the statements expressed are of a general nature and are not intended to address the circumstances of any particular individual or entity. Although we endeavor to provide accurate and timely information and use sources we consider reliable, there can be no guarantee that such information is accurate as of the date it is received or that it will continue to be accurate in the future. No one should act on such information without appropriate professional advice after a thorough examination of the particular situation.

Copyright © by Impact Forecasting®

No claim to original government works. The text and graphics of this publication are provided for informational purposes only. While Impact Forecasting® has tried to provide accurate and timely information, inadvertent technical inaccuracies and typographical errors may exist, and Impact Forecasting® does not warrant that the information is accurate, complete or current. The data presented at this site is intended to convey only general information on current natural perils and must not be used to make life-or-death decisions or decisions relating to the protection of property, as the data may not be accurate. Please listen to official information sources for current storm information. This data has no official status and should not be used for emergency response decision-making under any circumstances.

Cat Alerts use publicly available data from the internet and other sources. Impact Forecasting® summarizes this publicly available information for the convenience of those individuals who have contacted Impact Forecasting® and expressed an interest in natural catastrophes of various types. To find out more about Impact Forecasting or to sign up for the Cat Reports, visit Impact Forecasting's webpage at impactforecasting.com.

Copyright © by Aon plc. All rights reserved. No part of this document may be reproduced, stored in a retrieval system, or transmitted in any form or by any means, electronic, mechanical, photocopying, recording or otherwise. Impact Forecasting® is a wholly owned subsidiary of Aon plc.