

## Current Watches and Warnings

A **Tropical Storm Warning** is in effect from Fenwick Island, Delaware to Watch Hill, Rhode Island; including Long Island, New York and Long Island Sound; Southern Delaware Bay

## Current Details from the National Hurricane Center (NHC)

**COORDINATES:** 38.4° north, 74.5° west

**LOCATION:** 40 miles (65 kilometers) south-southeast of Cape May, New Jersey

**MOVEMENT:** north at 12 mph (19 kph)

**WINDS:** 60 mph (95 kph) with gusts to 70 mph (110 kph)

**RADIUS OF TROPICAL STORM-FORCE WINDS:** 140 miles (220 kilometers)

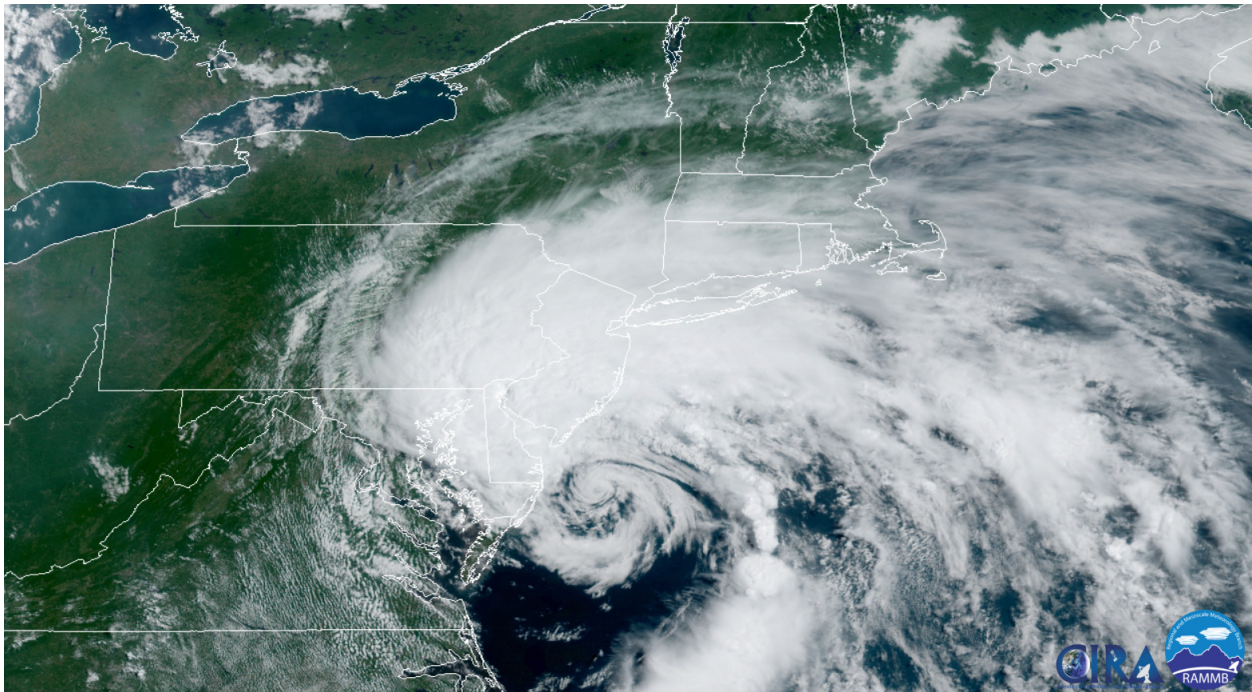
**MINIMUM CENTRAL PRESSURE:** 999 millibars

**SAFFIR-SIMPSON SCALE RANKING\*:** Tropical Storm

**FORECAST LANDFALL LOCATION:** New Jersey or New York

**FORECAST LANDFALL TIMEFRAME:** Friday afternoon or evening local time

## Latest Satellite Picture



Source: NOAA; NASA; Colorado State University (RAMMB)

# Discussion

Tropical Storm Fay, located approximately 40 miles (65 kilometers) south-southeast of Cape May, New Jersey, is currently tracking north at 12 mph (19 kph). Fay's center of circulation currently consists of a small low-level center rotating around inside of a much broader circulation. Deep thunderstorm activity remains displaced well to the north and southeast of the center as water vapor imagery shows dry air being wrapped into the circulation. The Air Force Reserve Hurricane Hunter aircraft investigating Fay this morning found that the pressure has fallen to around 999 millibars, and based on a blend various surface-level adjusted and flight level winds, the NHC has raised the initial intensity to 60 mph (95 kph).

The new NHC intensity forecast is similar to the previous one. Little change in strength is expected before Fay's center moves inland later today or this evening, with weakening expected after that time. While a 48-hour forecast point is provided, most of the models show the vortex dissipating by that time.

The initial motion estimate remains towards the north, and Fay will be steered generally in this direction until dissipation. It is being steered between a mid-level ridge of high pressure located over the western Atlantic and an approaching trough moving across the Great Lakes. Little change was made to the NHC track forecast, which lies close to the previous one and is near the middle of the guidance envelope.

Users should not place too much emphasis on the exact track of the center of Fay, as heavy rainfall and strong winds will continue to affect areas well away from the cyclone's center.

## Key Messages from the National Hurricane Center

1. Heavy rainfall from Delaware northward into New Jersey, eastern Pennsylvania, southeast New York, and southern New England may result in flash flooding and urban flooding in areas with poor drainage. Widespread river flooding is not expected at this time.
2. Tropical storm conditions will continue to spread northward across portions of the mid-Atlantic and northeast coast today and tonight, and a Tropical Storm Warning is in effect for the coasts of Delaware, New Jersey, New York, and Connecticut, including Long Island.

## Additional Information

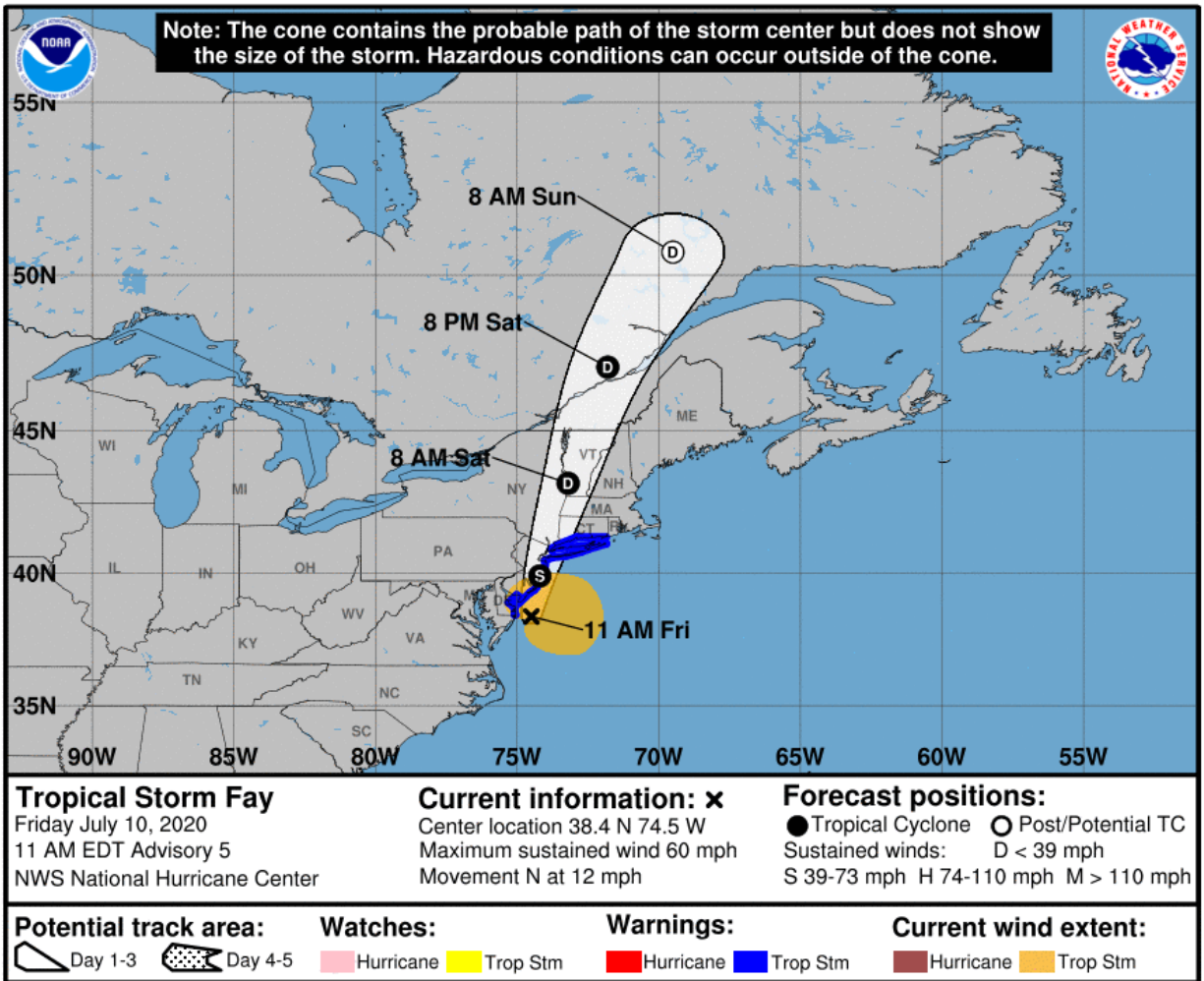
**RAINFALL:** Fay is expected to produce 2 to 4 inches of rain with isolated maxima of 7 inches along and near the track from Delaware northward into New Jersey, eastern Pennsylvania, southeast New York, and southern New England. The rain may result in flash flooding and urban flooding in areas with poor drainage where the heaviest amounts occur. Widespread river flooding is not expected at this time.

**WIND:** Tropical storm conditions will continue to spread northward within the warning area through tonight.

**STORM SURGE:** Minor coastal flooding is possible in portions of the Tropical Storm Warning area.

**TORNADOES:** Isolated tornadoes are possible today across coastal areas of New Jersey, southeast New York, and southern New England.

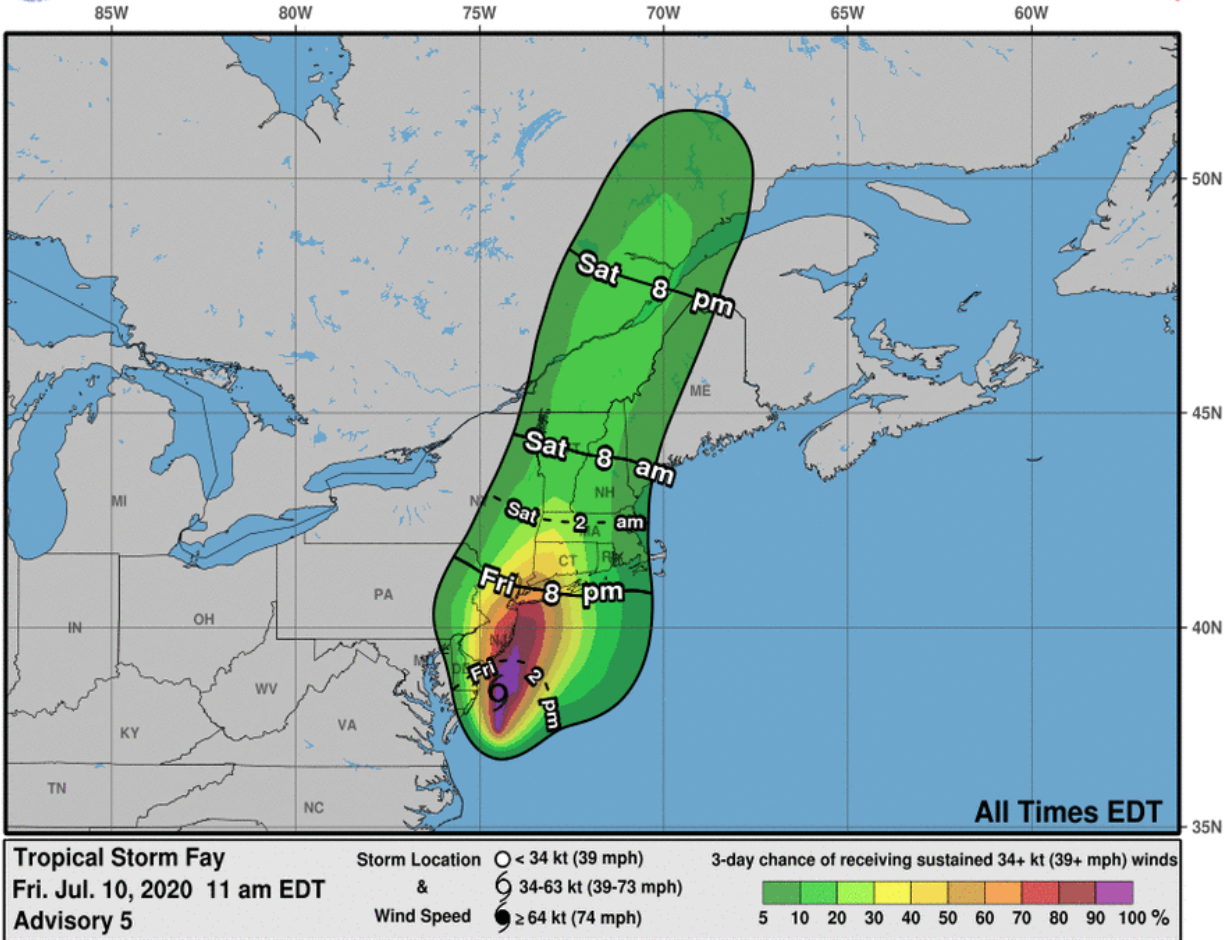
# National Hurricane Center (NHC) Forecast



# Most Likely Arrival Time of Tropical Storm-Force Winds



## 0-3 Day Most Likely Arrival Time of Tropical-Storm-Force Winds

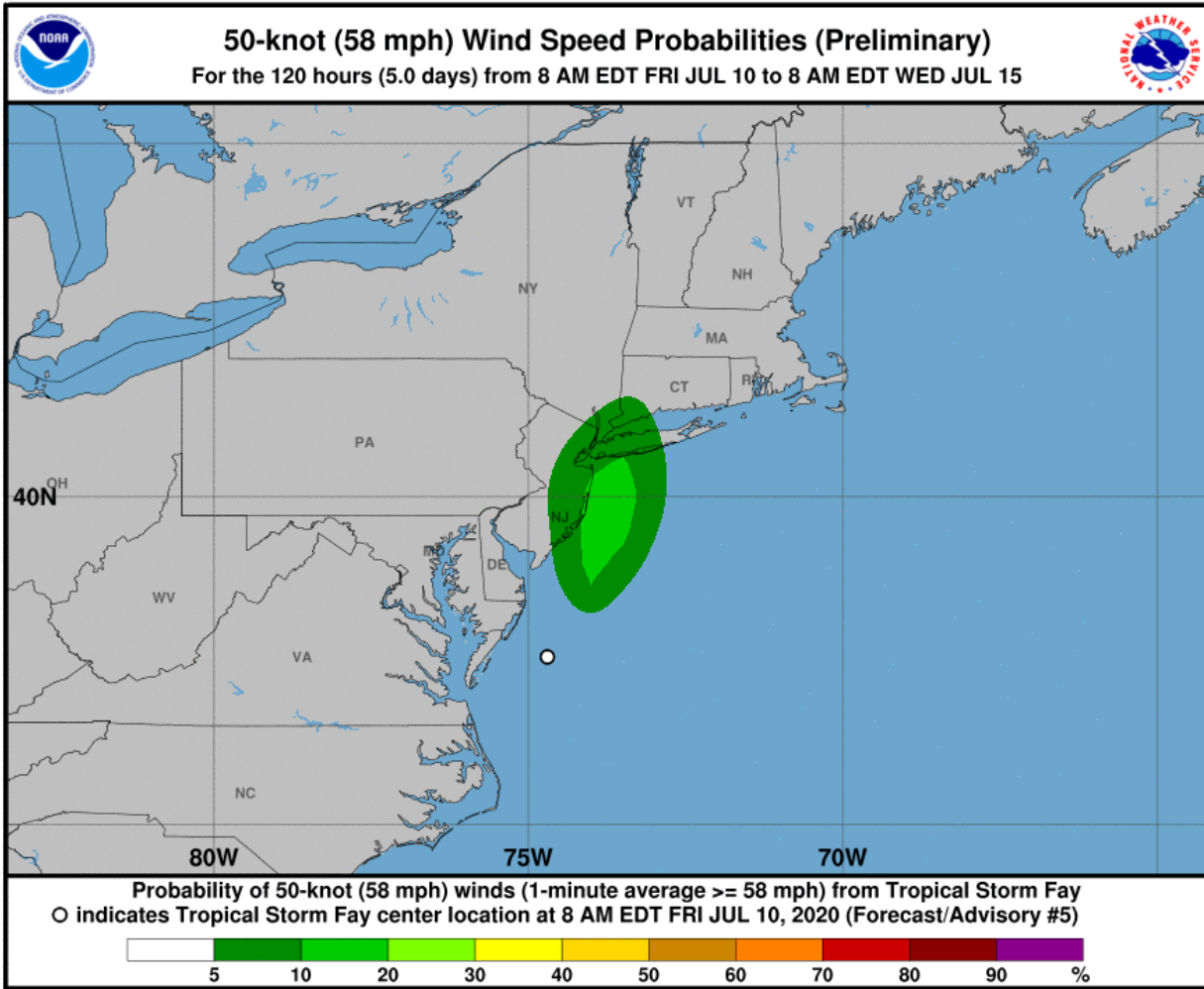


# National Hurricane Center: Wind Speed Probabilities

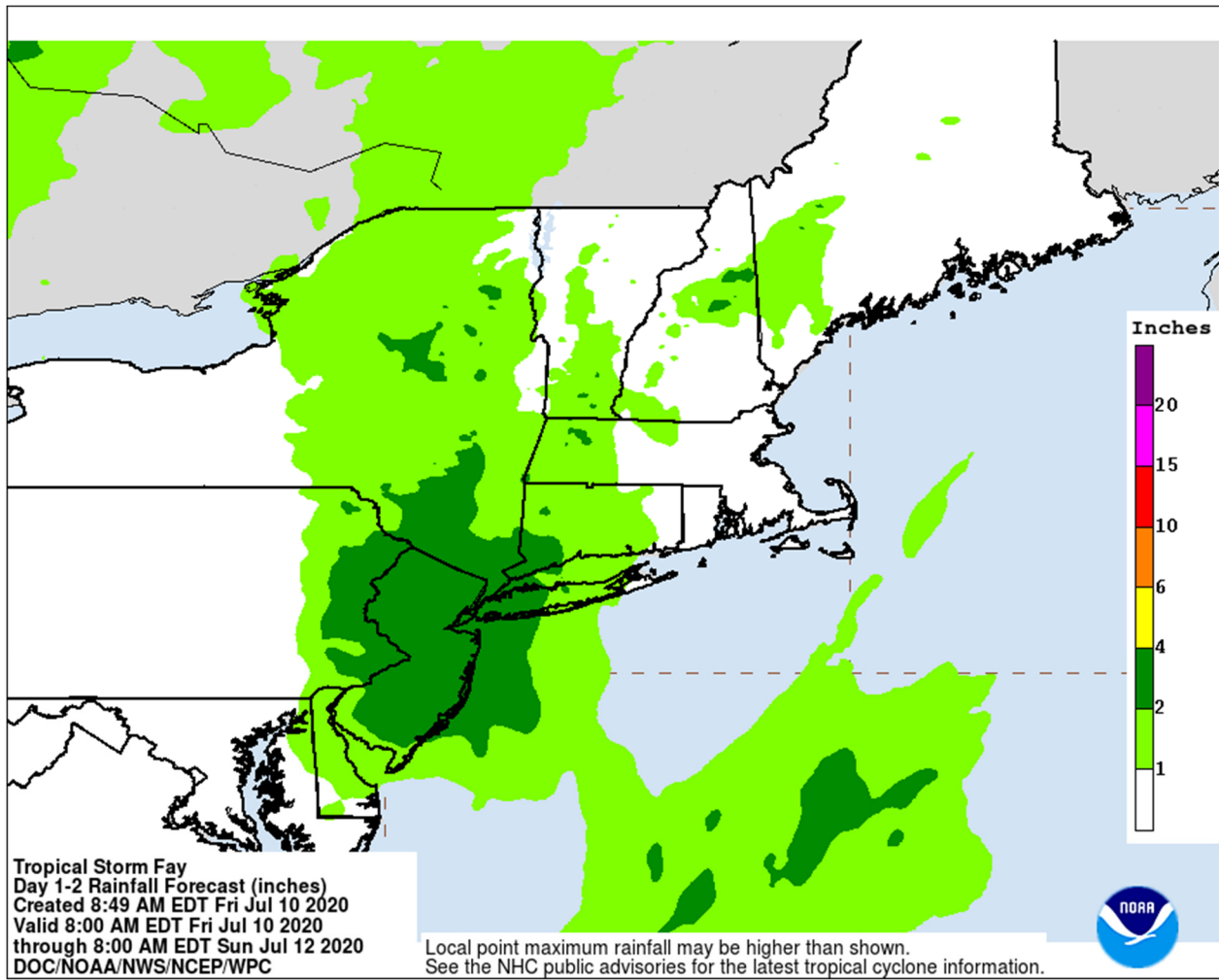
## Tropical Storm-Force Wind Probabilities ( $\geq 40$ mph (65 kph))



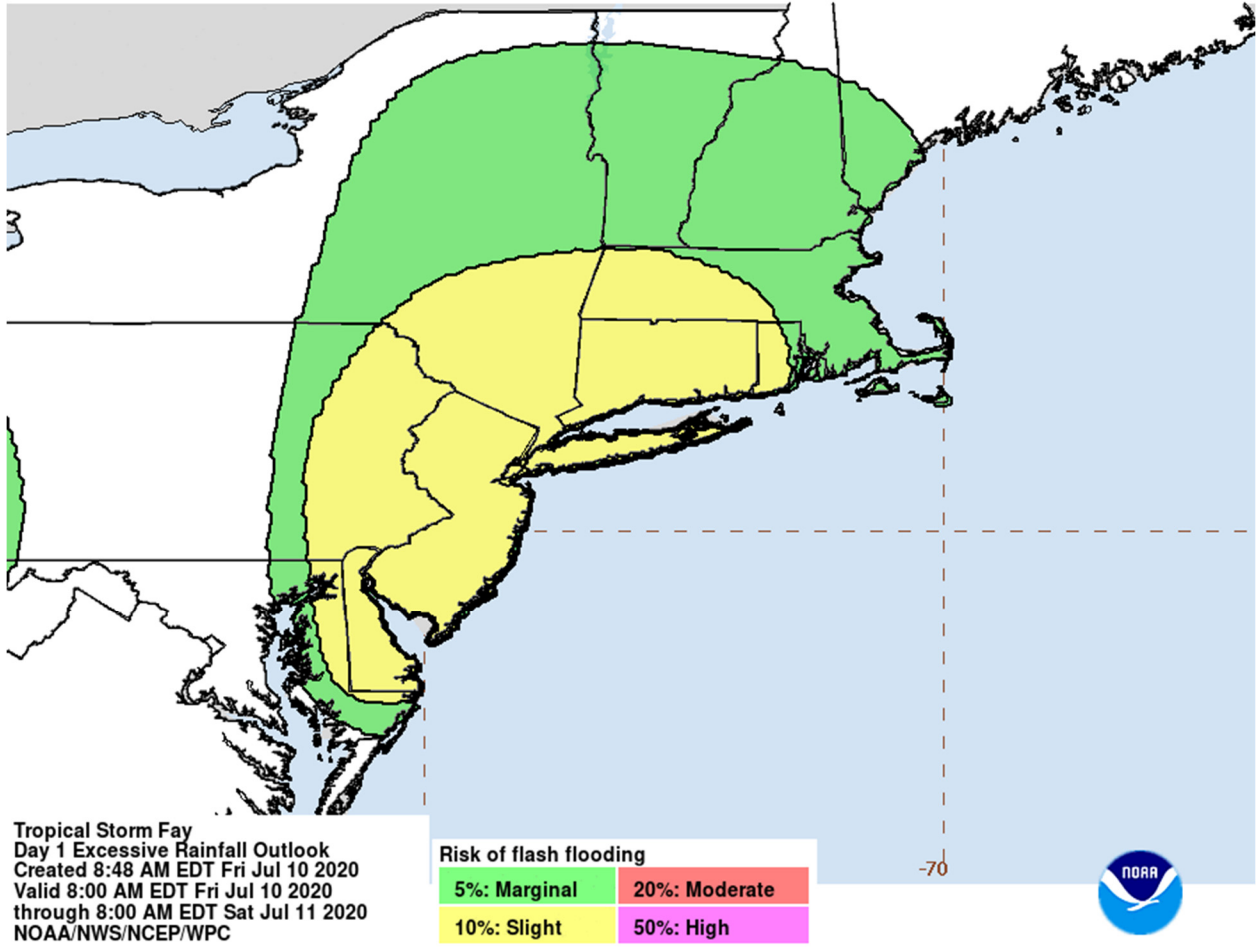
# Wind Probabilities ( $\geq 60$ mph (95 kph))



# Weather Prediction Center: Rainfall Potential

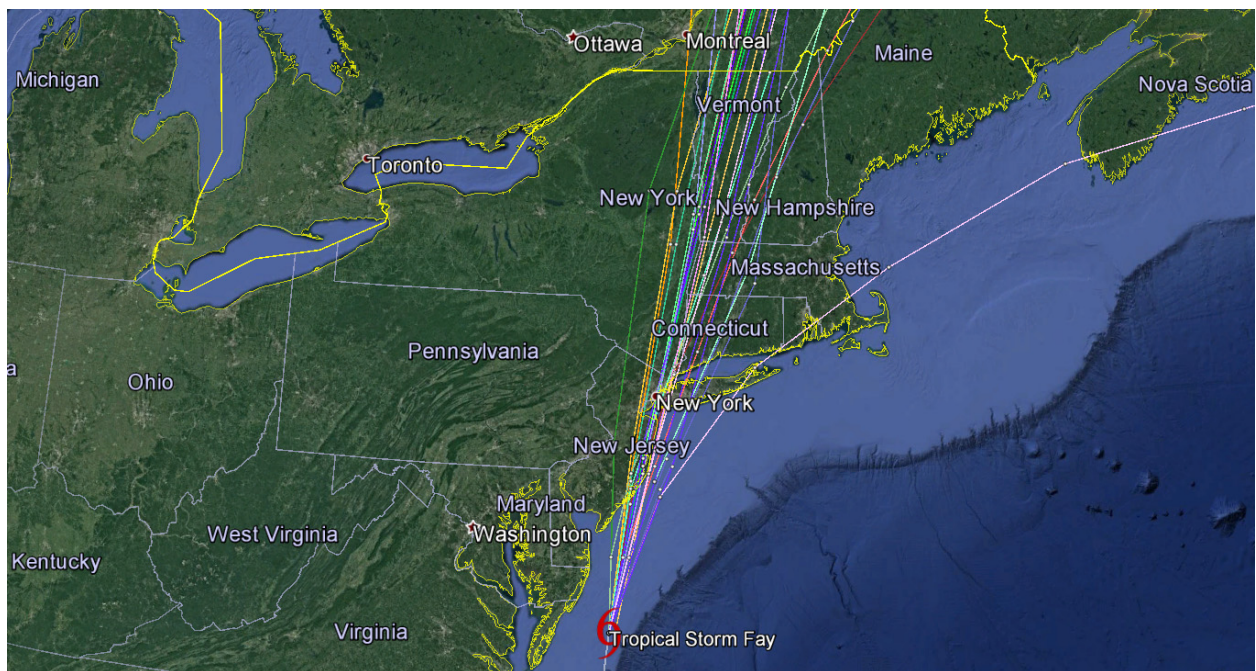


# Weather Prediction Center: Flash Flood Potential





## Current 'Spaghetti' Model Output Data



Source: NHC

## Additional Information and Update Schedule

Wind intensity forecasts and forecast track information can be found via the National Hurricane Center at [www.nhc.noaa.gov](http://www.nhc.noaa.gov)

**NEXT CAT ALERT:** Since landfall will occur later today and rapid weakening is anticipated shortly afterwards, this is the final Cat Alert. Full details on any impacts will be found in next week's Weekly Cat Report.

# \*Tropical Cyclone Intensity Classifications for Global Basins

WIND SPEED			BASINS AND MONITORING BUREAU						
KTS <sup>1</sup>	MPH <sup>1</sup>	KPH <sup>1</sup>	NE Pacific, Atlantic	NW Pacific	NW Pacific	SW Pacific	Australia	SW Indian	North Indian
			National Hurricane Center (NHC)	Joint Typhoon Warning Center (JTWC)	Japan Meteorological Agency (JMA)	Fiji Meteorological Service (FMS)	Bureau Of Meteorology (BOM)	Meteo-France (MF)	India Meteorological Department (IMD)
30	35	55	Tropical Depression	Tropical Depression	Tropical Depression	Tropical Depression	Tropical Low	Tropical Depression	Deep Depression
35	40	65	Tropical Storm	Tropical Storm	Tropical Storm	Cat. 1 Tropical Cyclone	Cat. 1 Tropical Cyclone	Moderate Tropical Storm	Cyclonic Storm
40	45	75							
45	50	85							
50	60	95							
55	65	100							
60	70	110	Cat. 1 Hurricane	Typhoon	Typhoon	Cat. 3 Severe Tropical Cyclone	Cat. 3 Severe Tropical Cyclone	Tropical Cyclone	Very Severe Cyclonic Storm
65	75	120							
70	80	130							
75	85	140							
80	90	150							
85	100	160	Cat. 2 Hurricane	Typhoon	Typhoon	Cat. 4 Severe Tropical Cyclone	Cat. 4 Severe Tropical Cyclone	Intense Tropical Cyclone	Very Severe Cyclonic Storm
90	105	170							
95	110	175	Cat. 3 Major Hurricane	Typhoon	Typhoon	Cat. 4 Severe Tropical Cyclone	Cat. 4 Severe Tropical Cyclone	Intense Tropical Cyclone	Very Severe Cyclonic Storm
100	115	185							
105	120	195							
110	125	205	Cat. 4 Major Hurricane	Super Typhoon	Super Typhoon	Cat. 5 Severe Tropical Cyclone	Cat. 5 Severe Tropical Cyclone	Very Intense Tropical Cyclone	Super Cyclonic Storm
115	130	210							
120	140	220							
125	145	230							
130	150	240	Cat. 5 Major Hurricane	Super Typhoon	Super Typhoon	Cat. 5 Severe Tropical Cyclone	Cat. 5 Severe Tropical Cyclone	Very Intense Tropical Cyclone	Super Cyclonic Storm
135	155	250							
140	160	260							
>140	>160	>260	Cat. 5 Major Hurricane	Super Typhoon	Super Typhoon	Cat. 5 Severe Tropical Cyclone	Cat. 5 Severe Tropical Cyclone	Very Intense Tropical Cyclone	Super Cyclonic Storm

# About Aon

Aon plc (NYSE:AON) is a leading global professional services firm providing a broad range of risk, retirement and health solutions. Our 50,000 colleagues in 120 countries empower results for clients by using proprietary data and analytics to deliver insights that reduce volatility and improve performance.

© Aon plc 2019. All rights reserved.

The information contained herein and the statements expressed are of a general nature and are not intended to address the circumstances of any particular individual or entity. Although we endeavor to provide accurate and timely information and use sources we consider reliable, there can be no guarantee that such information is accurate as of the date it is received or that it will continue to be accurate in the future. No one should act on such information without appropriate professional advice after a thorough examination of the particular situation.

Copyright © by Impact Forecasting®

No claim to original government works. The text and graphics of this publication are provided for informational purposes only. While Impact Forecasting® has tried to provide accurate and timely information, inadvertent technical inaccuracies and typographical errors may exist, and Impact Forecasting® does not warrant that the information is accurate, complete or current. The data presented at this site is intended to convey only general information on current natural perils and must not be used to make life-or-death decisions or decisions relating to the protection of property, as the data may not be accurate. Please listen to official information sources for current storm information. This data has no official status and should not be used for emergency response decision-making under any circumstances.

Cat Alerts use publicly available data from the internet and other sources. Impact Forecasting® summarizes this publicly available information for the convenience of those individuals who have contacted Impact Forecasting® and expressed an interest in natural catastrophes of various types. To find out more about Impact Forecasting or to sign up for the Cat Reports, visit Impact Forecasting's webpage at [impactforecasting.com](http://impactforecasting.com).

Copyright © by Aon plc. All rights reserved. No part of this document may be reproduced, stored in a retrieval system, or transmitted in any form or by any means, electronic, mechanical, photocopying, recording or otherwise. Impact Forecasting® is a wholly owned subsidiary of Aon plc.