

Current Details from the Joint Typhoon Warning Center

COORDINATES: 13.4° north, 114.1° east

LOCATION: 750 kilometers (465 miles) east-southeast of Da Nang, Vietnam

MOVEMENT: west at 22 kph (14 mph)

WINDS: 185 kph (115 mph) with gusts to 230 kph (145 mph)

RADIUS OF TROPICAL STORM-FORCE WINDS: 305 kilometers (190 miles)

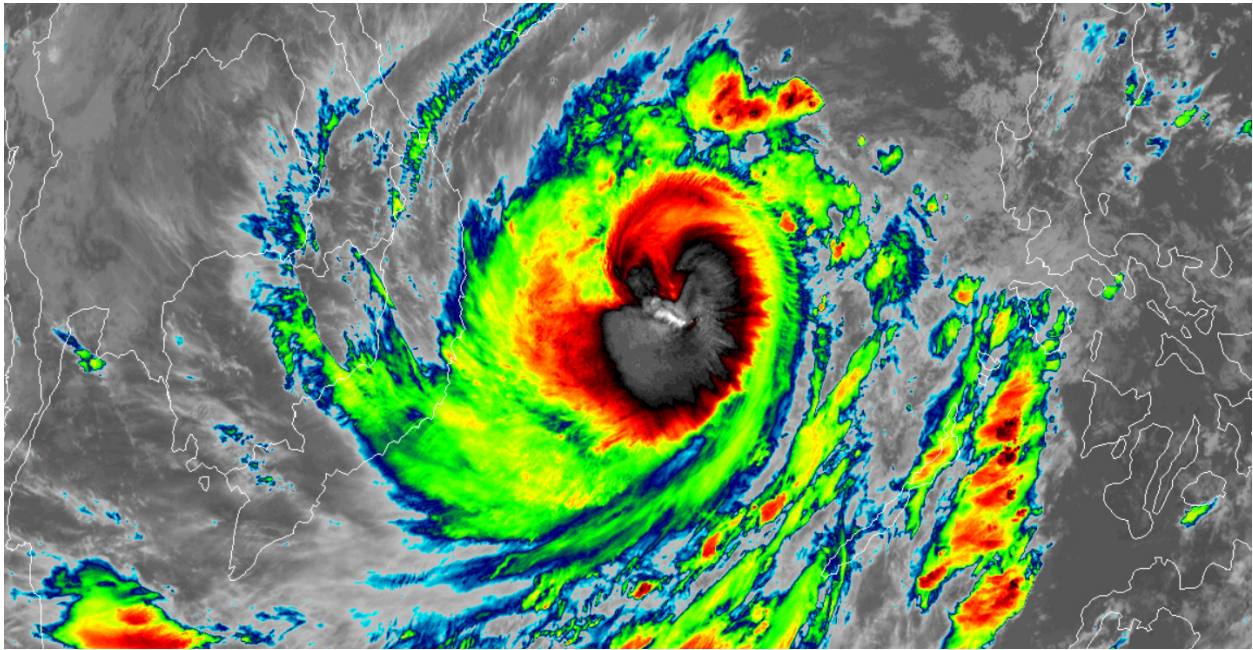
RADIUS OF HURRICANE-FORCE WINDS: 95 kilometers (60 miles)

SAFFIR-SIMPSON SCALE RANKING*: Category 3

FORECAST LANDFALL LOCATION: central Vietnam

FORECAST LANDFALL TIMEFRAME: early afternoon Wednesday local time

Latest Satellite Picture



Source: NOAA / NASA / Colorado State University (RAAMB)

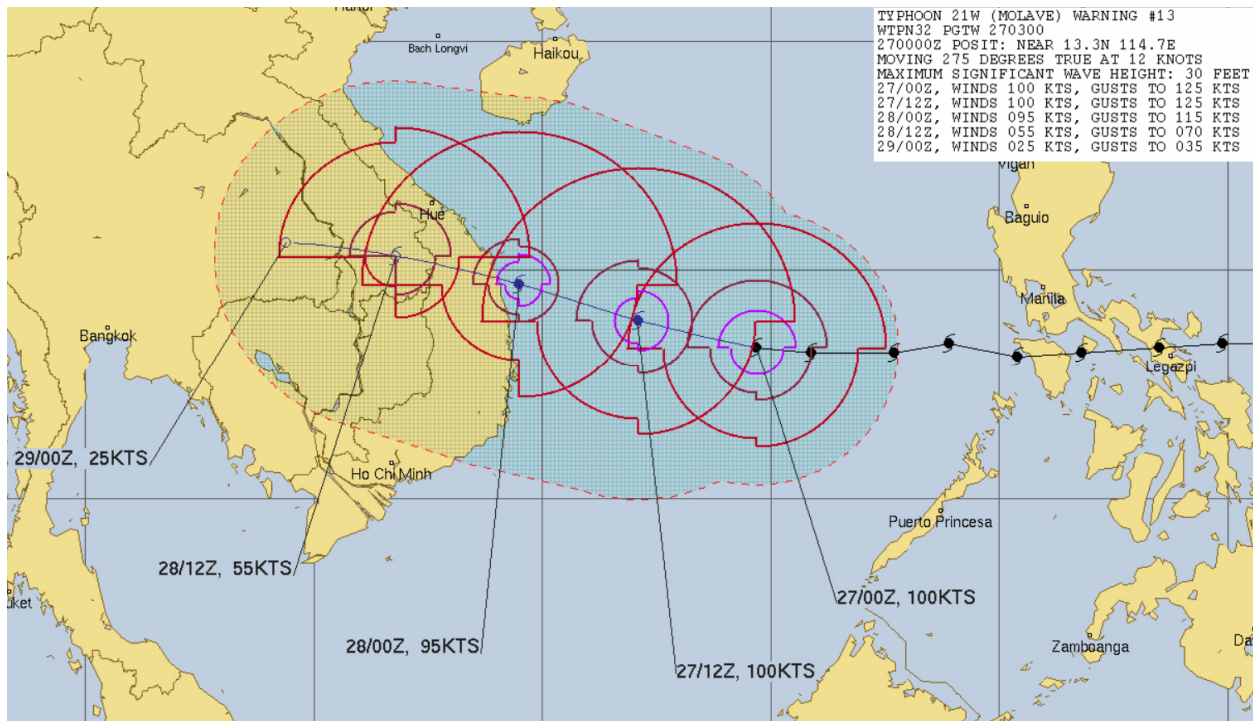
Discussion

Typhoon Molave, located approximately 750 kilometers (465 miles) east-southeast of Da Nang, Vietnam, is currently tracking west at 22 kph (14 mph). Satellite imagery continues to show spiral bands of convection wrapping into an obscured low-level circulation center. The eye feature has continued to cycle and fill during the past six hours. The JTWC has set an initial intensity of 185 kph (115 mph) – equivalent to a Category 3 hurricane on the Saffir-Simpson Hurricane Wind Scale; 1-minute sustained average) – based on the latest Dvorak satellite estimates. The typhoon continues to be steered by a ridge of high pressure located to the north and is located in an oceanic and atmospheric environment that remains marginally favorable for additional development. Sea surface temperatures remain warm, though moderate vertical wind shear persists on the northern periphery of the cyclone.

The system is forecast to continue tracking west to west-northwestward through the remainder of the forecast period as the previously noted ridge located over southern China remains the primary steering mechanism. The JTWC expects Molave to remain a 185 kph (115 mph) storm during the next 12 hours as it tracks through a generally favorable environment. After that time, and as it nears landfall in Vietnam, increasing wind shear and cooler ocean waters will lead to gradual weakening to 175 kph (110 mph) – equivalent to a high-end Category 2 hurricane. Landfall is expected to occur during the next 24 to 36 hours in an area south of Da Nang, Vietnam. Rapid weakening over land will occur after coming ashore, though the system is poised to bring additional torrential rainfall and high winds to parts of Vietnam and Cambodia that has endured significant flooding in recent weeks.

Full dissipation is expected within 24 hours after coming ashore. The forecast model guidance remains in excellent agreement through the landfall point.

Joint Typhoon Warning Center Forecast



Additional Information and Update Schedule

Wind intensity forecasts and forecast track information can be found via the Joint Typhoon Warning Center at <https://metocph.nmci.navy.mil/jtwc.php>

NEXT CAT ALERT: Wednesday morning after 10:00 AM Singapore Time (03:00 UTC).

*Tropical Cyclone Intensity Classifications for Global Basins

WIND SPEED			BASINS AND MONITORING BUREAU							
KTS ¹	MPH ¹	KPH ¹	NE Pacific, Atlantic	NW Pacific	NW Pacific	SW Pacific	Australia	SW Indian	North Indian	
			National Hurricane Center (NHC)	Joint Typhoon Warning Center (JTWC)	Japan Meteorological Agency (JMA)	Fiji Meteorological Service (FMS)	Bureau Of Meteorology (BOM)	Meteo-France (MF)	India Meteorological Department (IMD)	
30	35	55	Tropical Depression	Tropical Depression	Tropical Depression	Tropical Depression	Tropical Low	Tropical Depression	Deep Depression	
35	40	65	Tropical Storm	Tropical Storm	Tropical Storm	Cat. 1 Tropical Cyclone	Cat. 1 Tropical Cyclone	Moderate Tropical Storm	Cyclonic Storm	
40	45	75								
45	50	85								
50	60	95								
55	65	100								
60	70	110	Cat. 1 Hurricane	Typhoon	Typhoon	Cat. 3 Severe Tropical Cyclone	Cat. 3 Severe Tropical Cyclone	Tropical Cyclone	Very Severe Cyclonic Storm	
65	75	120								
70	80	130								
75	85	140								
80	90	150								
85	100	160	Cat. 2 Hurricane		Typhoon	Typhoon	Cat. 4 Severe Tropical Cyclone	Cat. 4 Severe Tropical Cyclone		Intense Tropical Cyclone
90	105	170								
95	110	175								
100	115	185	Cat. 3 Major Hurricane		Super Typhoon	Super Typhoon	Cat. 5 Severe Tropical Cyclone	Cat. 5 Severe Tropical Cyclone		Very Intense Tropical Cyclone
105	120	195								
110	125	205								
115	130	210	Cat. 4 Major Hurricane	Super Typhoon	Super Typhoon	Cat. 5 Severe Tropical Cyclone	Cat. 5 Severe Tropical Cyclone	Very Intense Tropical Cyclone		
120	140	220								
125	145	230								
130	150	240	Cat. 5 Major Hurricane	Super Typhoon	Super Typhoon	Cat. 5 Severe Tropical Cyclone	Cat. 5 Severe Tropical Cyclone	Very Intense Tropical Cyclone		
135	155	250								
140	160	260								
>140	>160	>260	Cat. 5 Major Hurricane	Super Typhoon	Super Typhoon	Cat. 5 Severe Tropical Cyclone	Cat. 5 Severe Tropical Cyclone	Very Intense Tropical Cyclone	Super Cyclonic Storm	

About Aon

Aon plc (NYSE:AON) is a leading global professional services firm providing a broad range of risk, retirement and health solutions. Our 50,000 colleagues in 120 countries empower results for clients by using proprietary data and analytics to deliver insights that reduce volatility and improve performance.

© Aon plc 2020. All rights reserved.

The information contained herein and the statements expressed are of a general nature and are not intended to address the circumstances of any particular individual or entity. Although we endeavor to provide accurate and timely information and use sources we consider reliable, there can be no guarantee that such information is accurate as of the date it is received or that it will continue to be accurate in the future. No one should act on such information without appropriate professional advice after a thorough examination of the particular situation.

Copyright © by Impact Forecasting®

No claim to original government works. The text and graphics of this publication are provided for informational purposes only. While Impact Forecasting® has tried to provide accurate and timely information, inadvertent technical inaccuracies and typographical errors may exist, and Impact Forecasting® does not warrant that the information is accurate, complete or current. The data presented at this site is intended to convey only general information on current natural perils and must not be used to make life-or-death decisions or decisions relating to the protection of property, as the data may not be accurate. Please listen to official information sources for current storm information. This data has no official status and should not be used for emergency response decision-making under any circumstances.

Cat Alerts use publicly available data from the internet and other sources. Impact Forecasting® summarizes this publicly available information for the convenience of those individuals who have contacted Impact Forecasting® and expressed an interest in natural catastrophes of various types. To find out more about Impact Forecasting or to sign up for the Cat Reports, visit Impact Forecasting's webpage at impactforecasting.com.

Copyright © by Aon plc. All rights reserved. No part of this document may be reproduced, stored in a retrieval system, or transmitted in any form or by any means, electronic, mechanical, photocopying, recording or otherwise. Impact Forecasting® is a wholly owned subsidiary of Aon plc.